

192 NARELLAN ROAD CAMPBELLTOWN STAGE 1

LANDSCAPE DEVELOPMENT APPLICATION

July 2021

REV. B



Australia
China
South East Asia

Follow us on



placedesigngroup.com

Report title	192 Narellan Road, Campbelltown
Document number	2521032
Prepared for	Landcom
Authors	Matthew Drury, Elia Naman
Revision number	A
Revision issue date	15/07/2020
Approved	Nick Ison
Reason for revision	DRAFT

Disclaimer: This report has been prepared in accordance with the scope of services described in the contract or agreement between Place Design Group Pty Ltd ACN 082 370063 and the Client. The report relies upon data, surveys, measurements and results taken at or under the particular times and conditions specified herein. Any findings, conclusions or recommendations only apply to the aforementioned circumstances and no greater reliance should be assumed or drawn by the Client. Furthermore, the report has been prepared solely for use by the Client and Place Design Group accepts no responsibility for its use by other parties.

CONTENTS

Introduction	LA-03
Site Context Plan	LA-04
Overall Site Plan	LA-05
Detail Plan 01 - Entry Basin	LA-06
Detail Plan 02 - St Clare Park	LA-07
Section AA	LA-08
Section BB	LA-09
Section CC	LA-10
Planting Schedule and Materials Palette	LA-11
Typical Maintenance Program	LA-12
Typical Installation Details	LA-13

INTRODUCTION / DESIGN STATEMENT

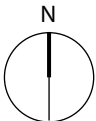


192 Narellan Road, Campbelltown forms part of the 'Maryfields Estate' and is informed by Campbelltown Council's DCP. The land is bounded by the Hume Motorway to the North/West, and Mayfields Drive to the North/East.

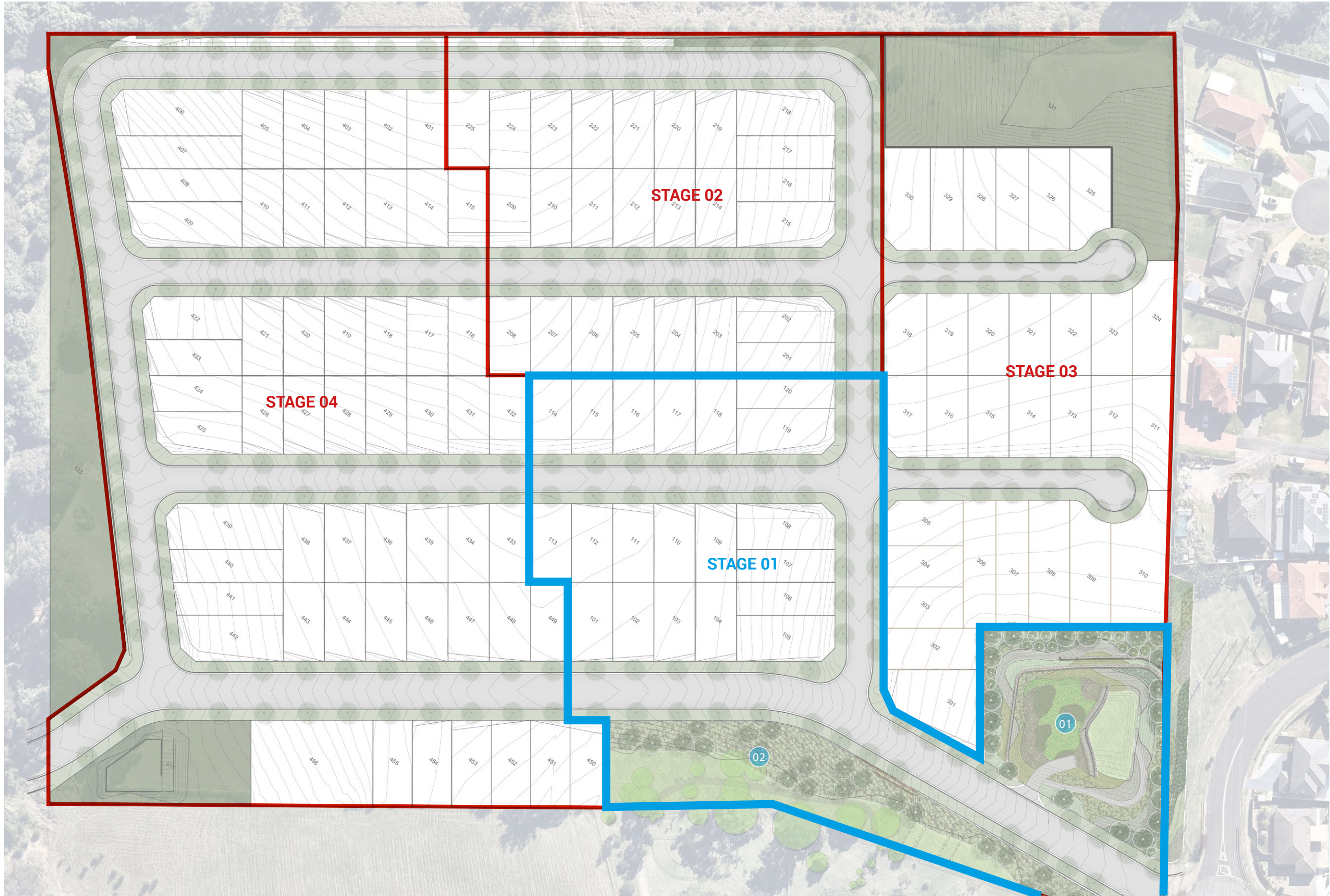
The landscape strategy for the precinct seeks to integrate green initiatives and sustainable approaches. The precinct will enhance biodiversity and ecological integrity of the development by providing a bio-retention basin and dense vegetation of native grasses, shrubs and trees.

St Clare Memorial Park will contain new shrub + low ground cover planting while retaining large existing trees where possible. The site will tie into the adjacent cemetery at Bethlehem Monastery and provide spaces for passive recreation. Signage, seating and a footpath have been proposed within an open and simple style with respect to the character of the landscape setting. There has also been an allowance for a future road.

CONTEXT PLAN



SITE PLAN



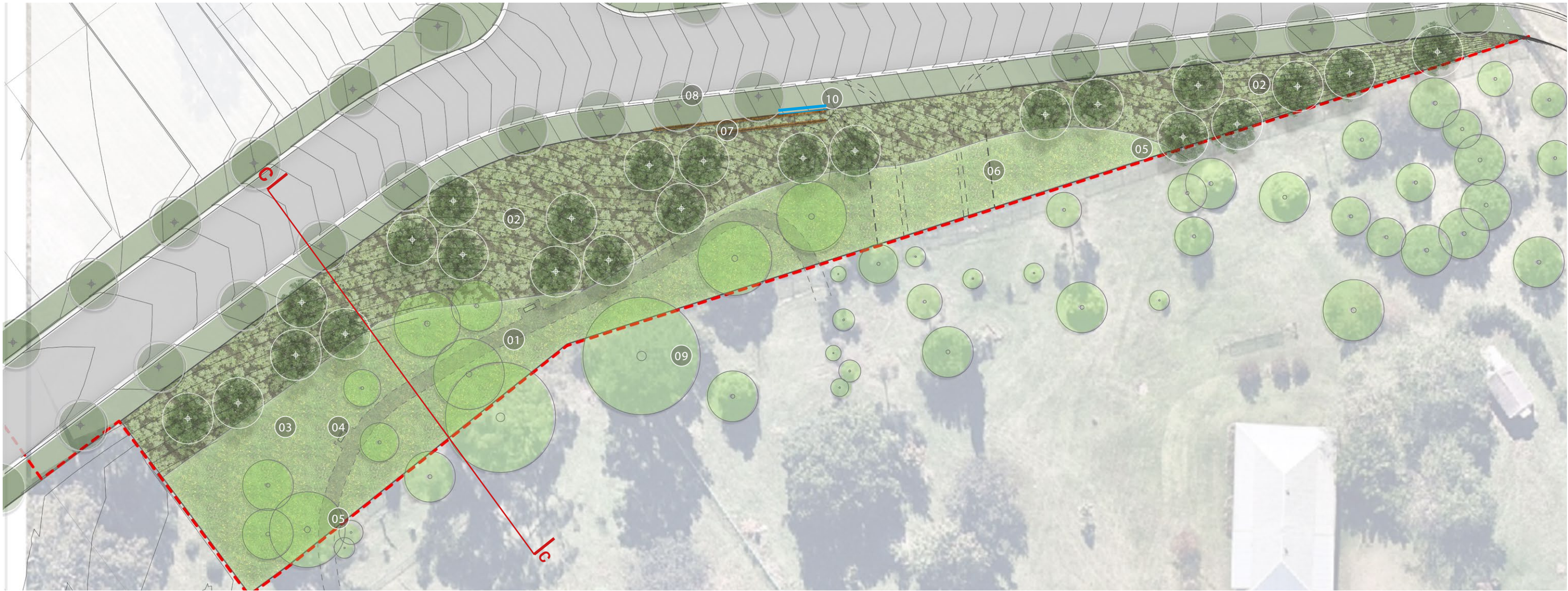
DETAIL PLAN 01 - ENTRY BASIN



LEGEND

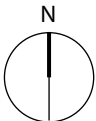
- 01 OSD TURF AREA
- 02 MAINTENANCE ACCESS
- 03 BIORETENTION SEDGES/RUSHES
- 04 BASIN EDGE PLANTING
- 05 SCREENING SHRUBS
- 06 ENTRY FEATURE SHRUBS
- 07 PROPOSED TREES
- 08 STACKED ROCK RETAINING WALL
- 09 STREET TREES BY OTHERS

DETAIL PLAN 02 - ST CLARE MEMORIAL PARK



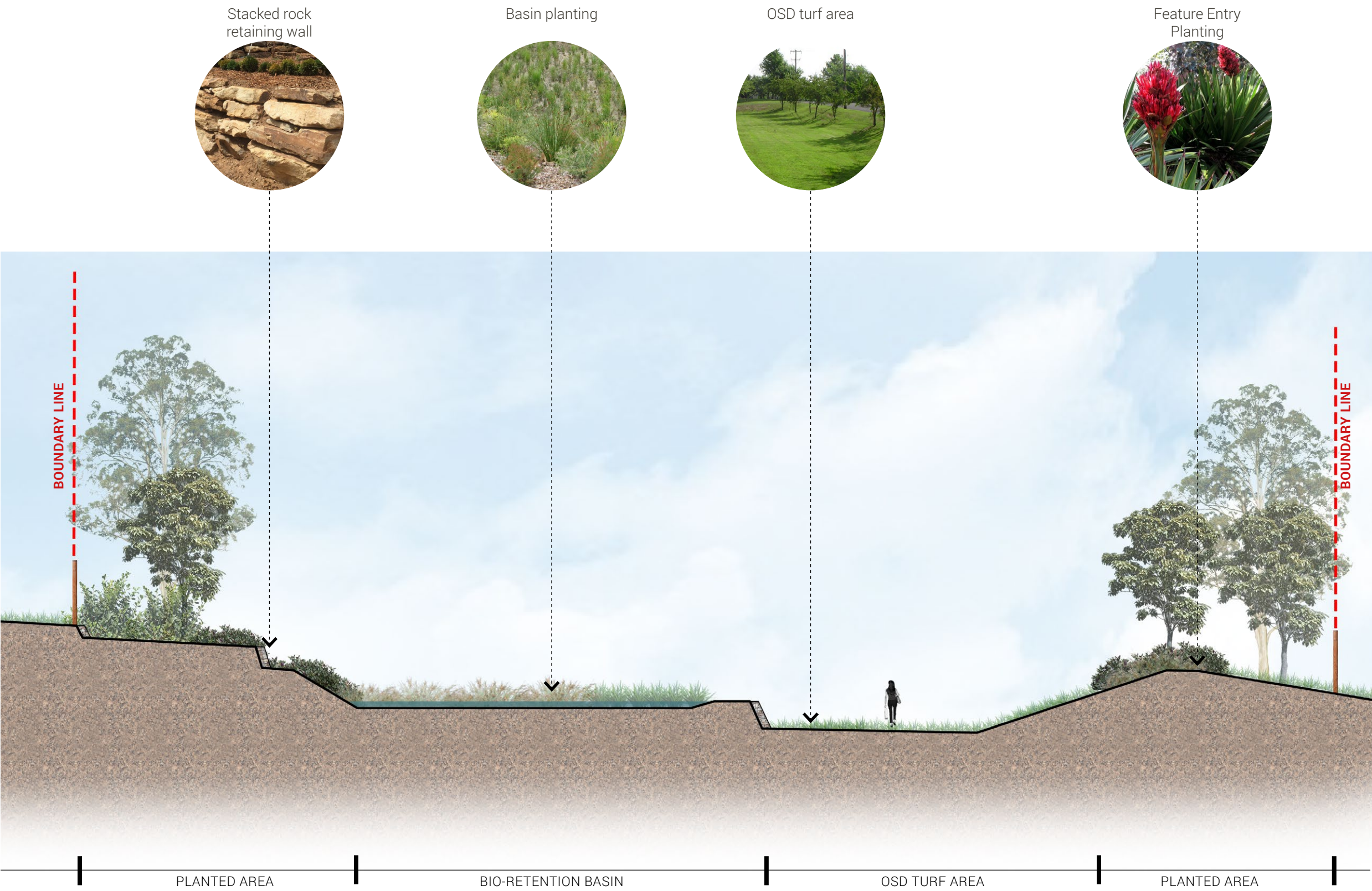
LEGEND

- 01 INDICATIVE CONCRETE FOOTPATH SUBJECT TO ADJACENT SITE DESIGN
- 02 EMBANKMENT MASS PLANTING + PROPOSED TREES
- 03 TURF AREA
- 04 INDICATIVE PARK BENCH
- 05 FUTURE CONNECTION TO ADJACENT SITE
- 06 POTENTIAL FUTURE ROAD ALIGNMENT
- 07 STACKED ROCK RETAINING WALL
- 08 PROPOSED STREET TREES BY OTHERS
- 09 EXISTING TREES TO BE RETAINED
- 10 INDICATIVE PARK SIGNAGE LOCATION SUBJECT TO ADJACENT SITE DESIGN

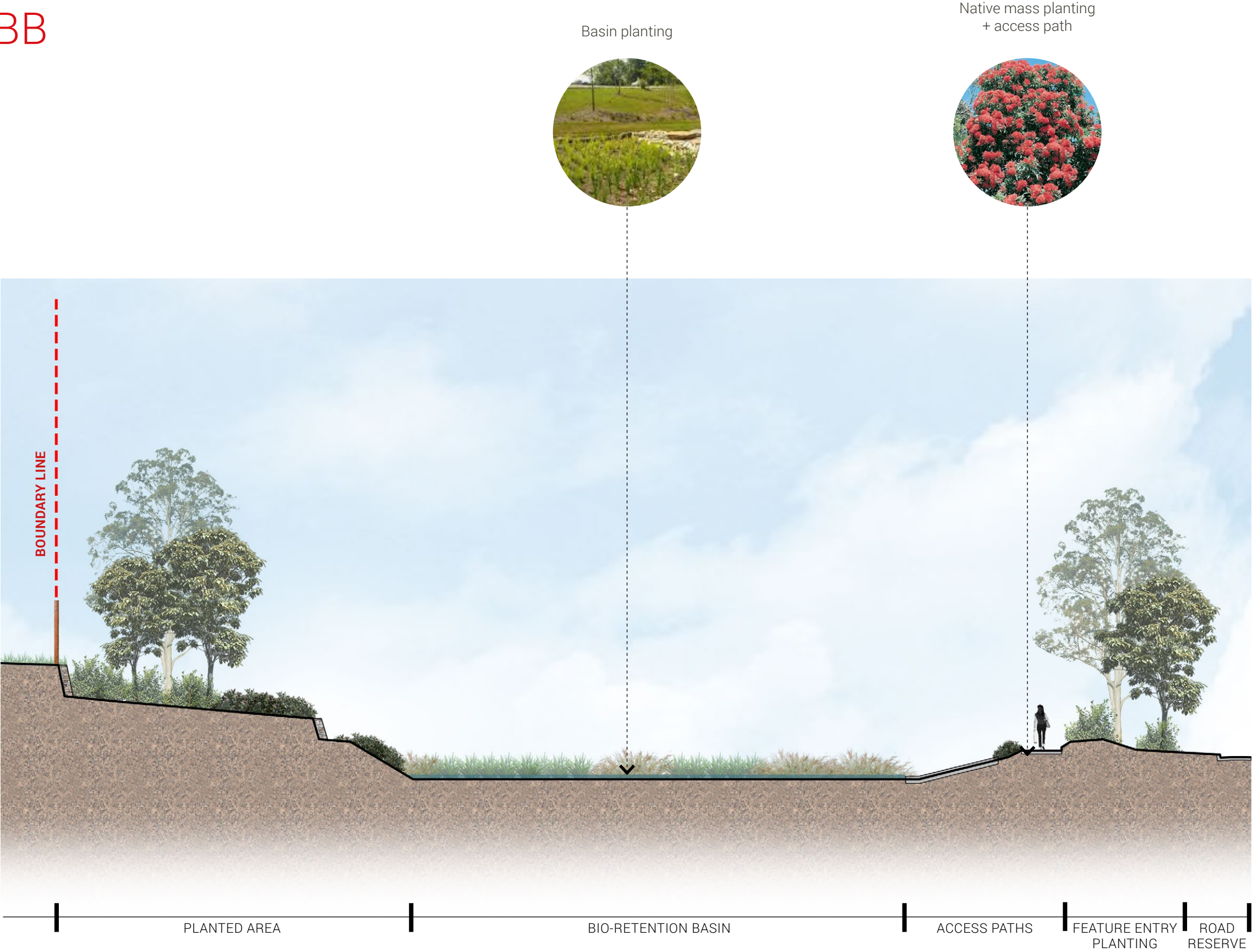


DATE	PROJECT NO.	REVISION	DWG NO.
19.07.2021	2521032	B	LA-7
0	10	20	30M/ 1:500@A3

SECTION AA



SECTION BB

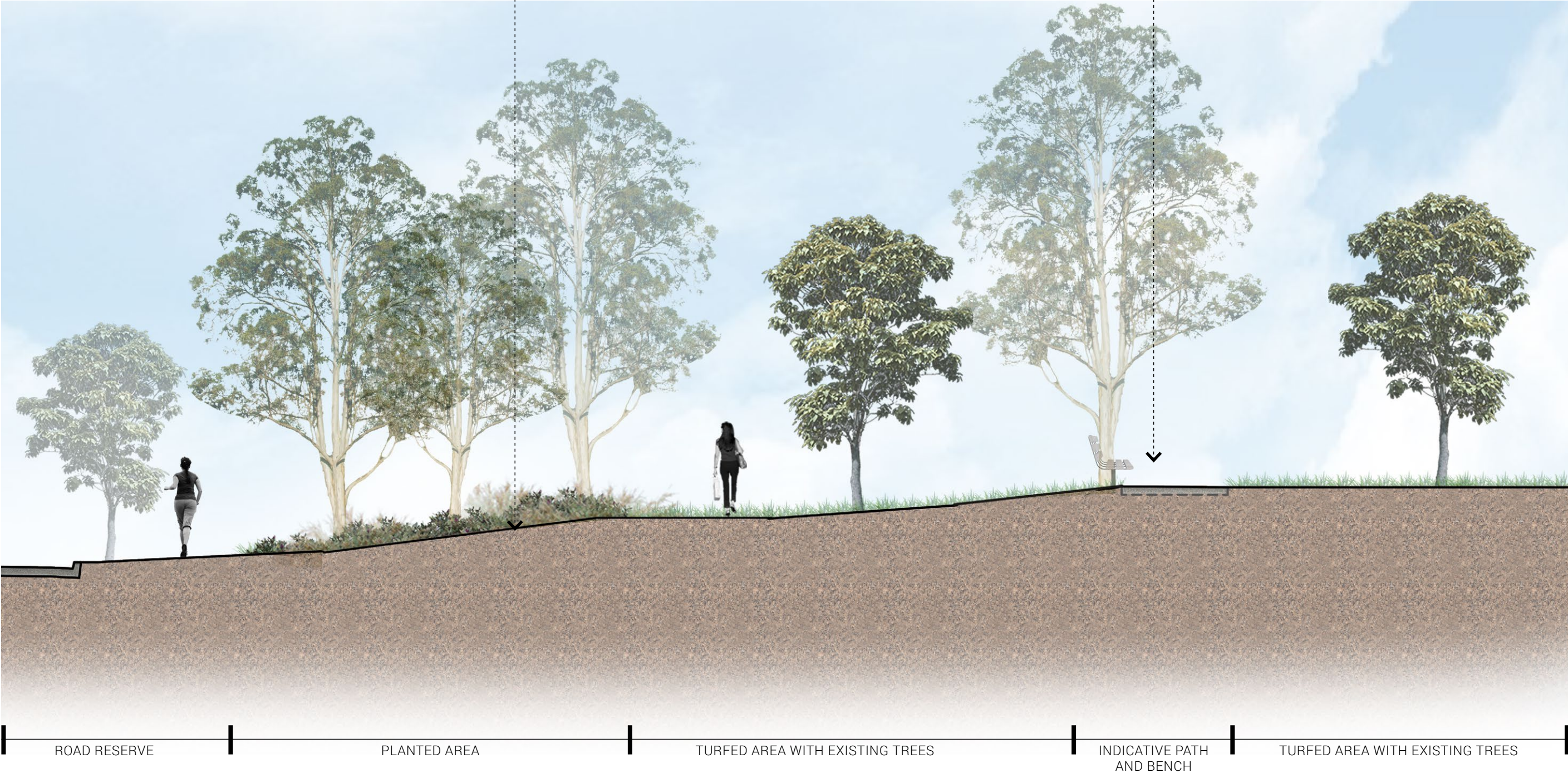


SECTION CC

Native shrubs + tree
planting along slope



Indicative concrete footpath
+ seating subject to adjacent
site design



PLANTING SCHEDULE AND MATERIALS PALETTE

INDICATIVE PLANTING SCHEDULE

Botanical Name	Common Name	Mature Height	Spread	Pot Size	Spacing/m2
TREES					
<i>Cupaniopsis anacardioides</i>	Tuckeroo	8-15	5	100L	As shown
<i>Corymbia ficifolia</i>	Flowering Gum			100L	As shown
<i>Elaeocarpus eumundi</i>	Eumundi Quandong	10	4	100L	As shown
<i>Eucalyptus punctata</i>	Grey gum	10 - 25	7	100L	As shown
<i>Eucalyptus tereticornis</i>	Forest red gum	20 - 50	10	100L	As shown
<i>Lophostemon confertus</i>	Queensland brush box	15	10	100L	As Shown
<i>Tristaniopsis laurina</i> 'luscious'	Water gum	7	5	100L	As shown
SHRUBS					
<i>Callistemon</i> 'Better John'	Dwarf Bottlebrush	0.6-1.2	60-90	300mm	As shown
<i>Doryanthes excelsa</i>	Gymea lily	1 (6m spike)	1	300mm	As shown
<i>Callistemon</i> 'Slim' Slim Bottlebrush	Slim Bottlebrush	3	0.7	300mm	As shown
<i>Melaleuca</i> 'Claret Tops'	Honey Myrtle	1	0.6	300mm	As shown
<i>Westringia</i> 'Wynyabbie Gem'	Coastal Rosemary	1	1.5-2	300mm	As shown
<i>Westringia</i> 'Zena'	Coastal Rosemary	0.6-0.9	0.9	300mm	As shown
GRASSES AND GROUNDCOVERS					
<i>Dianella revoluta</i> 'Little Rev'	Native Flax	1	2.5	150mm	As shown
<i>Dianella</i> 'Little Jess'	Flax lily	1	2.5	150mm	As shown
<i>Dichondra repens</i>	Kidney weed	0.1	5	150mm	As shown
<i>Liriope muscari</i> 'Evergreen Giant'	Evergreen Giant Lily Turf	0.5	0.5	150mm	As shown
<i>Lomandra longifolia</i>	Spiny Mat-rush	1.2	0.8	150mm	As shown
<i>Lomandra multiflora</i> ssp. multiflora	Many-flowered Mat-rush	0.9	0.5	150mm	As shown
<i>Lomandra tanika</i>	Tanika	0.5	0.6	150mm	As shown
<i>Oplismenus aemulus</i>	Basket grass	1.5	0.5	150mm	As shown
<i>Themeda australis</i>	Kangaroo grass	1.5	0.5	150mm	As shown
<i>Viola hederaceae</i>	Native Violet	0.3	0.6	150mm	As shown
SEDGES AND RUSHES					
<i>Ficinia nodosa</i>	Knobby Club Rush	1.2	0.5	150mm	As shown
<i>Juncus flavidus</i>	Mat Rush	1	0.5	150mm	As shown
<i>Juncus usitatus</i>	Mat Rush	1	0.5	150mm	As shown
<i>Carex appressa</i>	Sedge	1	0.5	150mm	As shown
<i>Lepironia articulata</i>	Grey rush	2	1	150mm	As shown
<i>Lomandra</i> 'Shara'	Lomandra Shara	0.5	0.5	150mm	As shown
<i>Lomandra</i> 'Katie Belles'	Lomandra Katie Belles	1.5	1.5	150mm	As shown
<i>Pennisetum</i> 'Nafray'	Swamp Foxtail Grass	0.6	0.6	150mm	As shown
<i>Poa eskdale</i>	Poa	0.6	0.5	150mm	As shown
TURF					
<i>Kikuyu Grass</i>	<i>Pennisetum clandestinum</i>				



Cupaniopsis anacardioides



Corymbia ficifolia



Eucalyptus punctata



Elaeocarpus eumundi



Lophostemon confertus



Tristaniopsis laurina



Callistemon 'Better John'



Doryanthes excelsa



Melaleuca 'Claret Tops'



Westringia 'Wynyabbie Gem'



Westringia 'Zena'



Dianella 'Little Jess'



Liriope muscari evergreen giant



Osismenus aemulus



Dianella 'Little Rev'



Themeda australis



Dichondra repens



Lomandra longifolia



Lomandra multiflora



Lomandra tanika



Juncus usitatus



Poa eskdale

TYPICAL MAINTENANCE PROGRAM

PLACE Design Group Pty Ltd

PROPOSED MAINTENANCE SCHEDULE

Client:

Clearstate

Project Name:

219 Narellen Rd, Campbelltown

Precinct Name:

All streetscape zones, open spaces

Works Description:

Maintenance of Soft Landscape areas

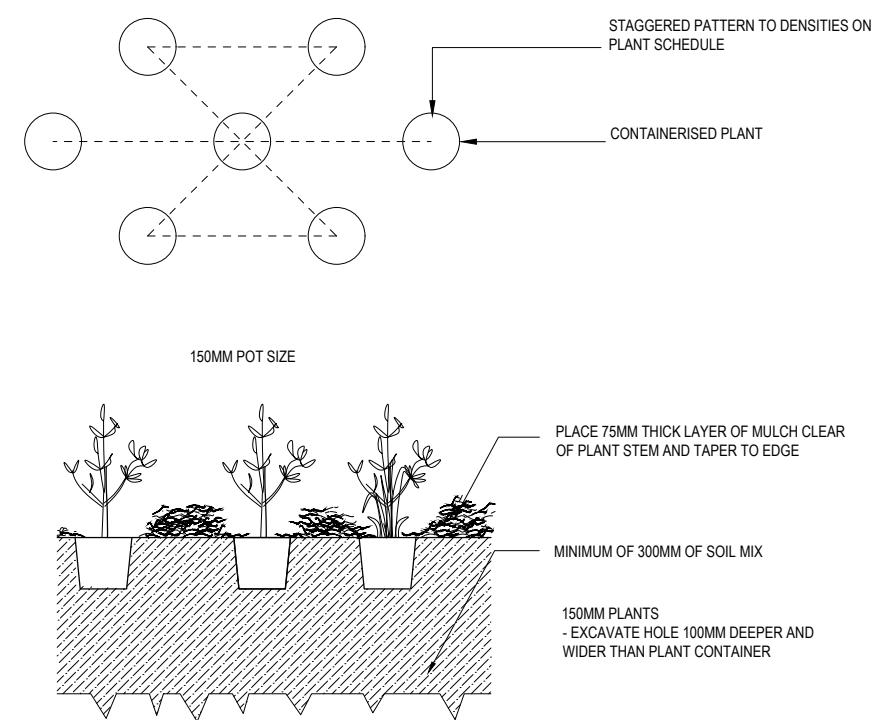
Maintenance Period:

12 Months from Practical Completion

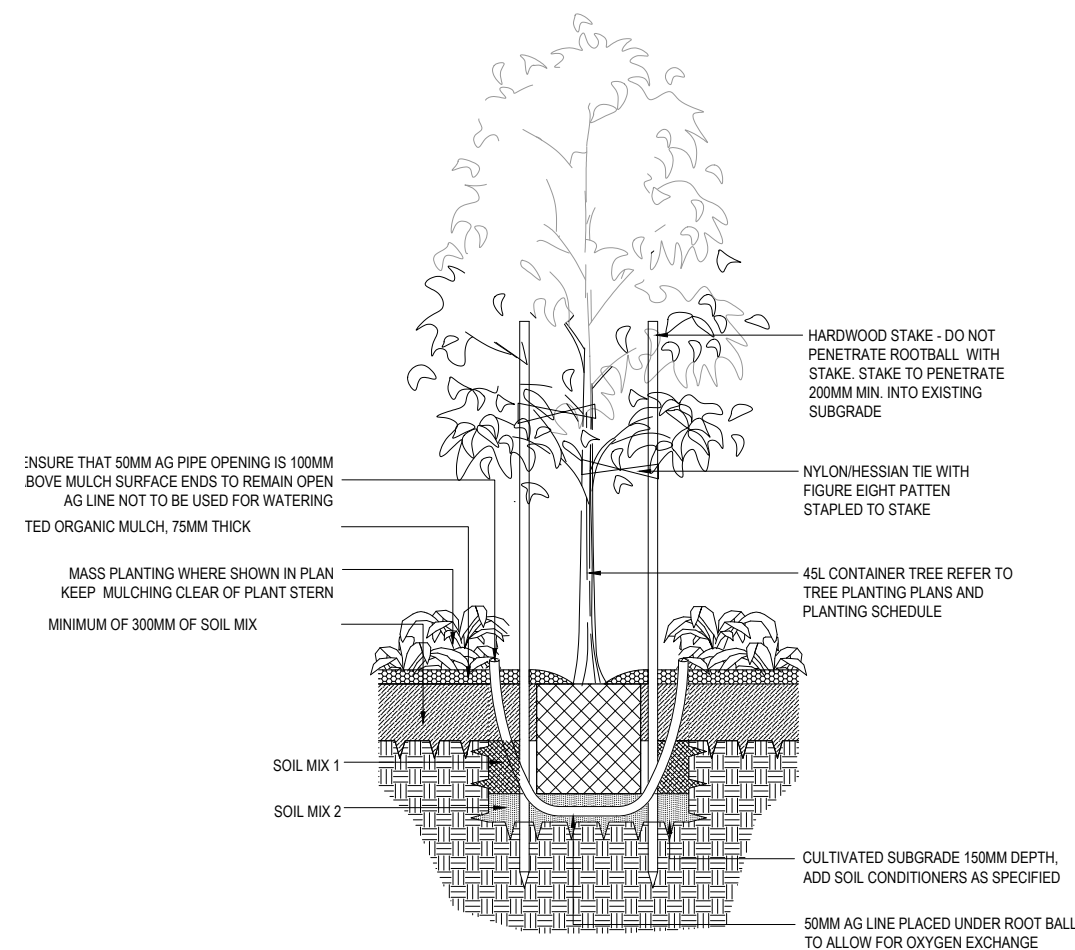
SOFTSCAPE AREAS:

TASK DESCRIPTION:	FREQUENCY: 0-6 Months	FREQUENCY: 6 - 12 Months
Trees Visual inspection of all trees Manually inspect water levels to trees Inspect damage to trees Replace any taping to trees Prune dead or damaged branches Check for and report pests & diseases Replace failed or damaged trees Spray in accordance with manufacturers recommendations Adjust &/or replace stakes & ties where necessary	<i>Fortnightly in summer/Monthly in Winter</i> <i>Fortnightly in summer/Monthly in Winter</i> <i>Fortnightly in summer/Monthly in Winter</i> <i>Fortnightly in summer/Monthly in Winter</i> <i>Fortnightly in summer/Monthly in Winter</i> <i>Fortnightly</i> <i>Fortnightly/As required</i> <i>As required</i> <i>As required</i>	Monthly in summer/Once in Winter Monthly in summer/Once in Winter Monthly in summer/Once in Winter Monthly in summer/Once in Winter Monthly in summer/Once in Winter Monthly Monthly/As required As required As required
Turf Mow all turf areas to maintain height between 25-35mm Trim edges of all turf areas Remove clippings from site Remove litter & debris from turf areas Check for and report pests & diseases Spray in accordance with manufacturers recommendations Monitor and apply fertiliser to turf areas	<i>Weekly in Summer/Monthly in Winter</i> <i>Weekly in Summer/Monthly in Winter</i> <i>Weekly in Summer/Monthly in Winter</i> <i>Weekly in Summer/Monthly in Winter</i> <i>Fortnightly</i> <i>As required</i> <i>6 month intervals - Autumn/Spring</i>	Fortnightly in Summer/Every 2 Months in Winter Fortnightly in Summer/Every 2 Months in Winter Fortnightly in Summer/Every 2 Months in Winter Fortnightly in Summer/Every 2 Months in Winter Monthly As required Yearly - Spring
Mulch Remove litter & debris from mulch areas Remove weed growth in mulch areas Top up mulch levels	<i>Fortnightly</i> <i>Fortnightly</i> <i>Annually</i>	Monthly Monthly Annually
Plants Check for and report pests & diseases Spray in accordance with manufacturers recommendations Prune damaged or dead branches Remove weed growth in plant areas Replace failed or damaged plants Adjust &/or replace stakes & ties where necessary	<i>Fortnightly</i> <i>Fortnightly</i> <i>Fortnightly</i> <i>Fortnightly</i> <i>Fortnightly/As required</i> <i>Fortnightly/As required</i>	Monthly Monthly Monthly Monthly Monthly/As required Monthly/As required
General Watering to all street trees Irrigation by water cart or hosecock as required to maintain plant vigor & health	Weekly first 6 months/Fortnightly there after dependent on rainfall conditions	Monthly dependent on rainfall conditions
Urgent works Report any theft, damage or vandalism	<i>Weekly</i>	As required

TYPICAL INSTALLATION DETAILS



DETAIL 1: MASS PLANTING DETAIL 1:40@A3



DETAIL 2: TREE PLANTING ON GRADE 1:40@A3